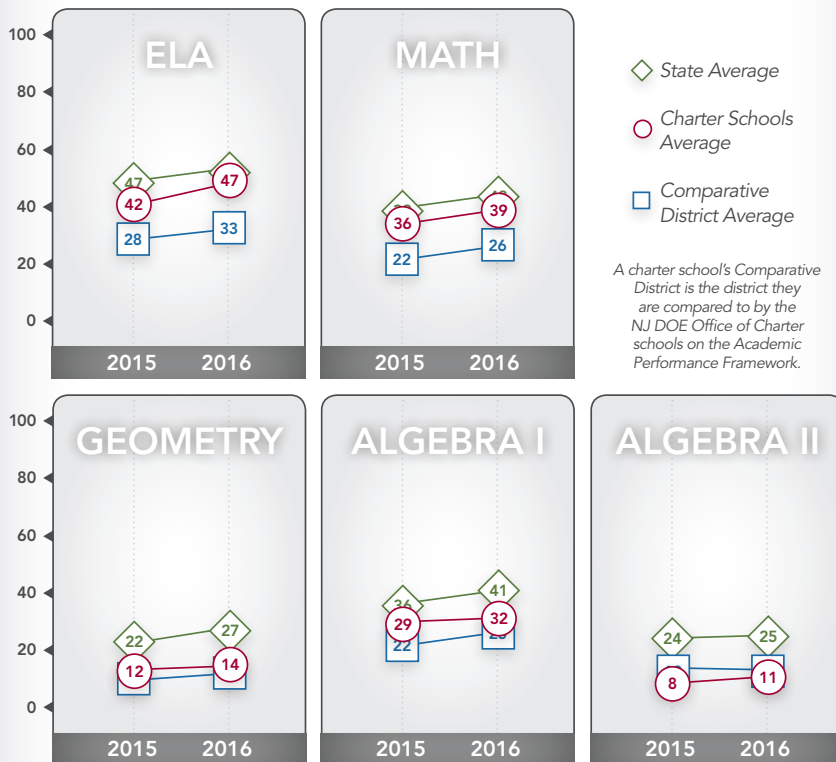
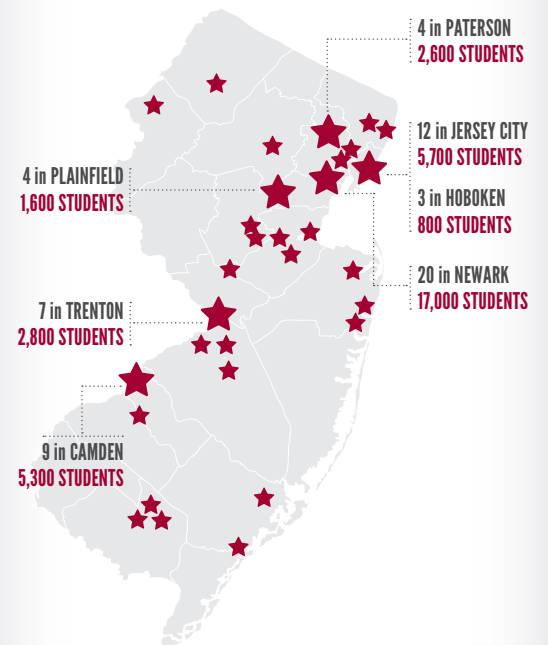


Charter Schools Show Performance Gains on PARCC Assessments

ELA (Grades 3-11)
Math (Grades 3-8)
Algebra I (Grades 9-11)
Algebra II (Grades 9-11)
Geometry (Grades 9-11)



There Are CURRENTLY 88 Operating Charter Schools



Charters Operate in 39 CITIES Throughout New Jersey

Source: 2016-17 Projected State-aid Notices

Charter Schools were only **4 percentage points** off the state average on the 15-16 PARCC ELA assessment

2015-16 Charter School Average Four-Year Cohort Graduation Rate: **87%**

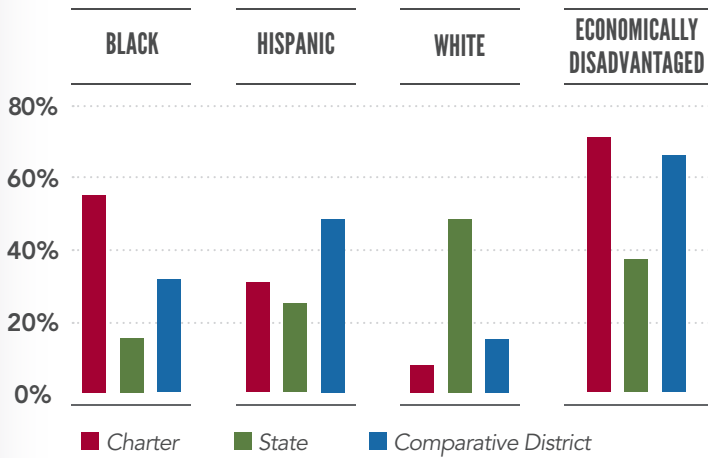
Charter Schools were only **5 percentage points** off the state average on the 15-16 PARCC Math assessment

3 SCHOOLS OPENED IN 2016-17

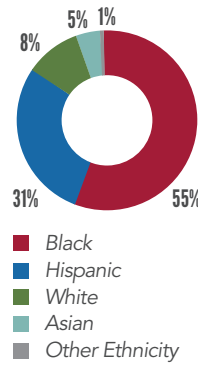
3 NEW SCHOOLS ARE EXPECTED TO OPEN IN 2017-18

Source: 2015-16 PARCC Assessment data publicly available and published by the NJ DOE.

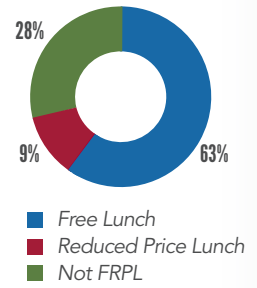
Ethnicity and Economic Status in Schools



Charter Schools ETHNICITY



Charter Schools ECONOMIC STATUS



86% OF STUDENTS IN CHARTERS ARE EITHER BLACK OR HISPANIC

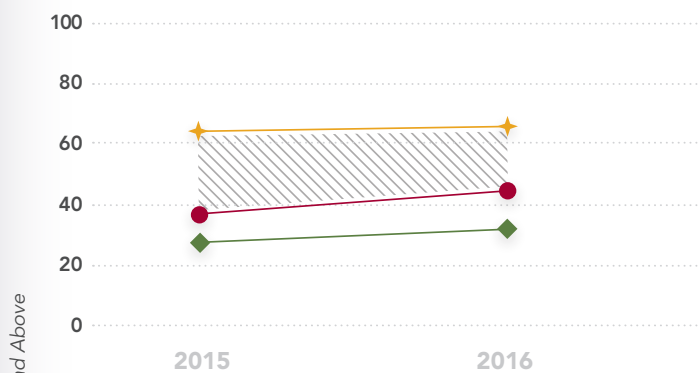
Source: Publicly available 15-16 ENR data released by the NJ DOE

72% OF CHARTER SCHOOL STUDENTS ARE ECONOMICALLY DISADVANTAGED

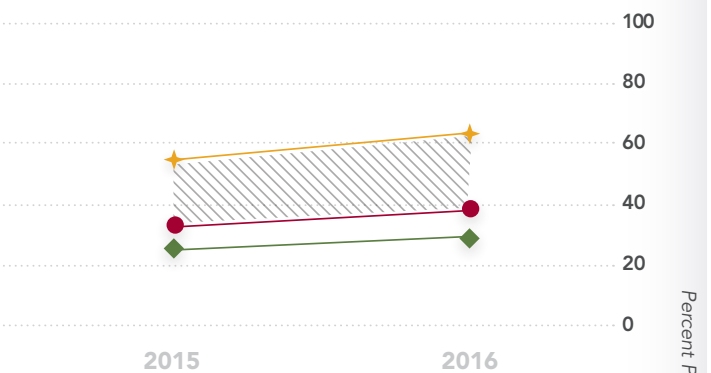
Charters Close the Achievement Gap

The achievement gap refers to the gap in proficiency rates between the state's historically underserved Black & Hispanic population and the state's White & Asian population.

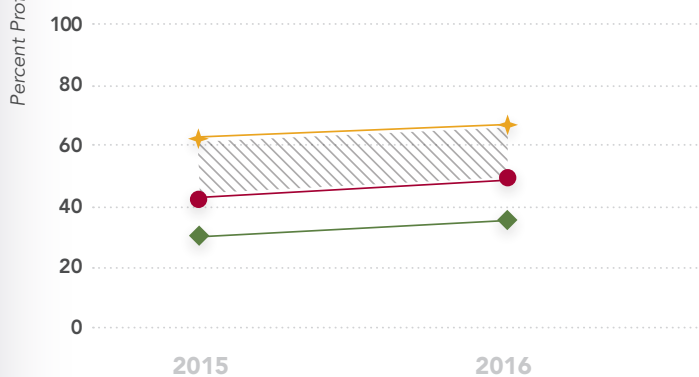
PARCC ELA Grades 3-5 ACHIEVEMENT GAP



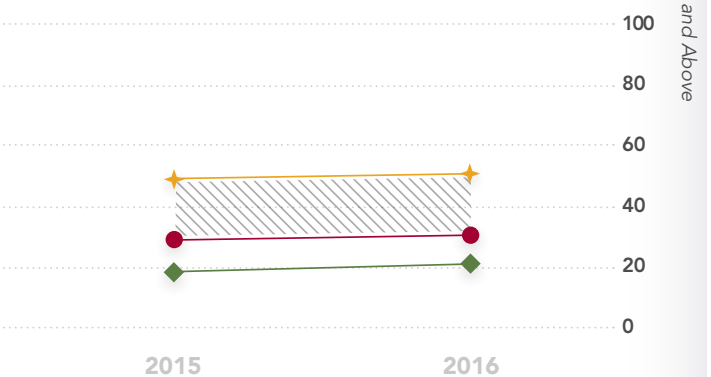
PARCC MATH Grades 3-5 ACHIEVEMENT GAP



PARCC ELA Grades 6-8 ACHIEVEMENT GAP



PARCC MATH Grades 6-8 ACHIEVEMENT GAP



● Charter Black/Hispanic ◆ State Black/Hispanic ★ State White/Asian

Source: Achievement Gap data is computed from publicly available 2015-16 PARCC data published by the NJ DOE.

Follow Us on Facebook!
facebook.com/njcharters



Follow Us on Twitter!
@NJCSA

www.njcharters.org

1 AAA Drive, Suite 206 / Hamilton, NJ 08691

609-989-9700

Updated 01/2017